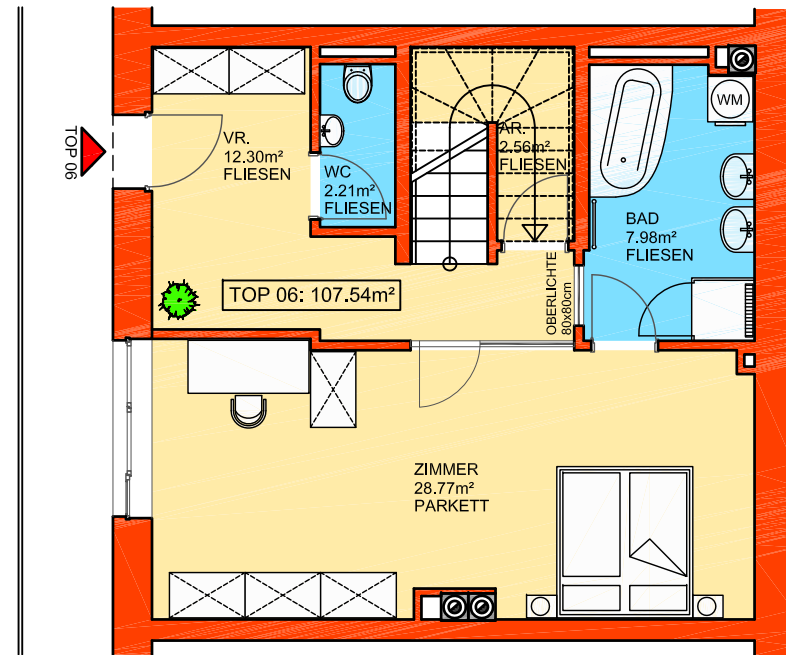
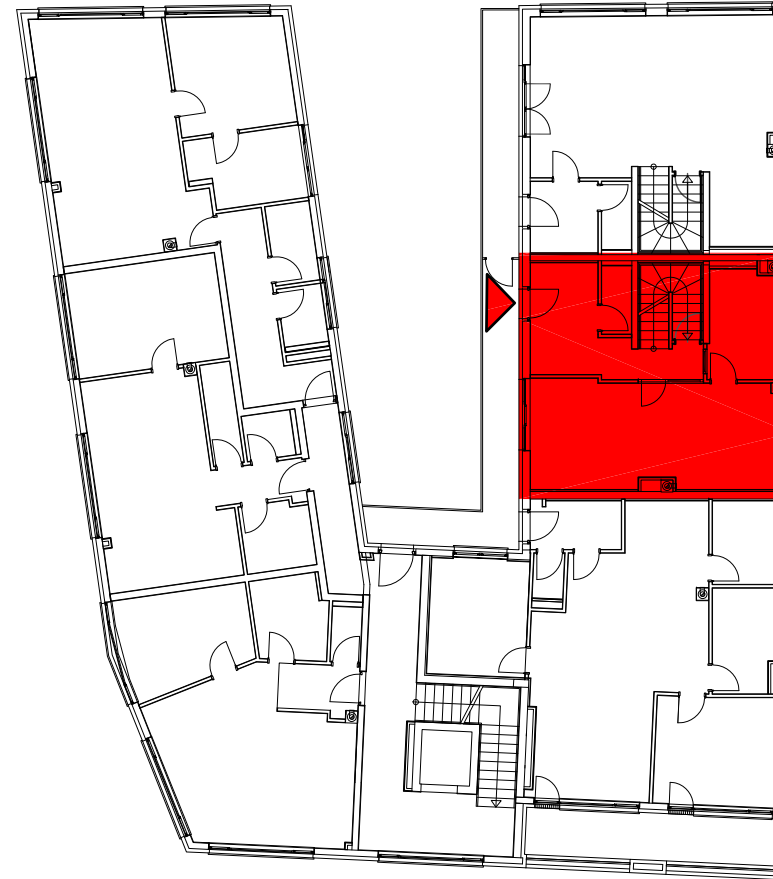


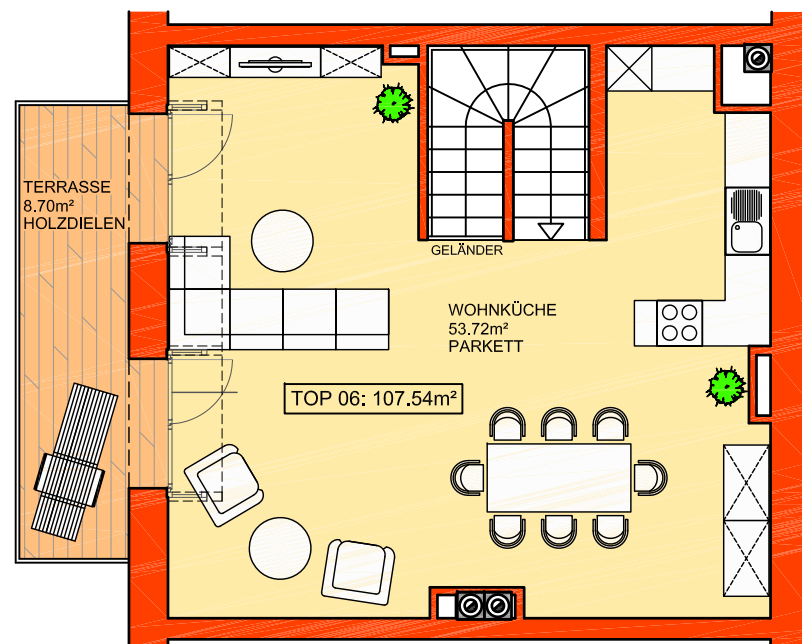
OBERGESCHOSS TOP 06 - 1:100



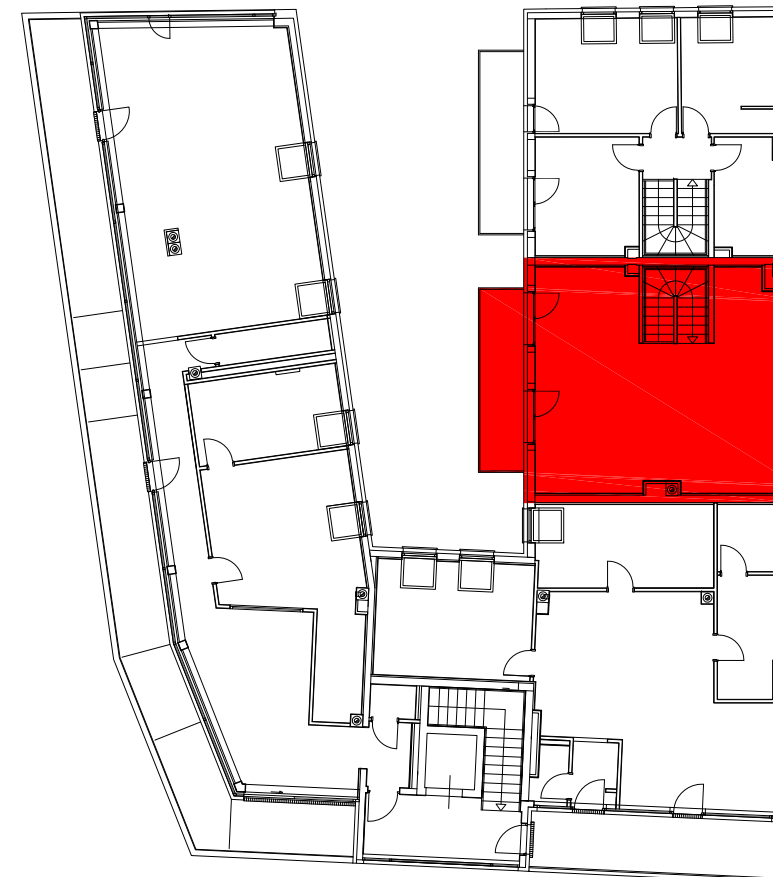
ÜBERSICHTSPLAN TOP 06 - 1:250



DACHGESCHOSS TOP 06 - 1:100



ÜBERSICHTSPLAN TOP 06 - 1:250



AUSFERTIGUNG

FLÄCHENAUFSTELLUNG

Zimmer	28.77m ²
Wohnküche	53.72m ²
Vorraum	12.30m ²
Abstellraum	2.56m ²
WC	2.21m ²
Badezimmer	7.98m ²
SUMME	107.54m²
Terrasse	8.70m ²
Kellerabteil	1.84m ²